

MONTHLY MEMBERSHIP PROGRESS REPORT

LOCATION INDIA

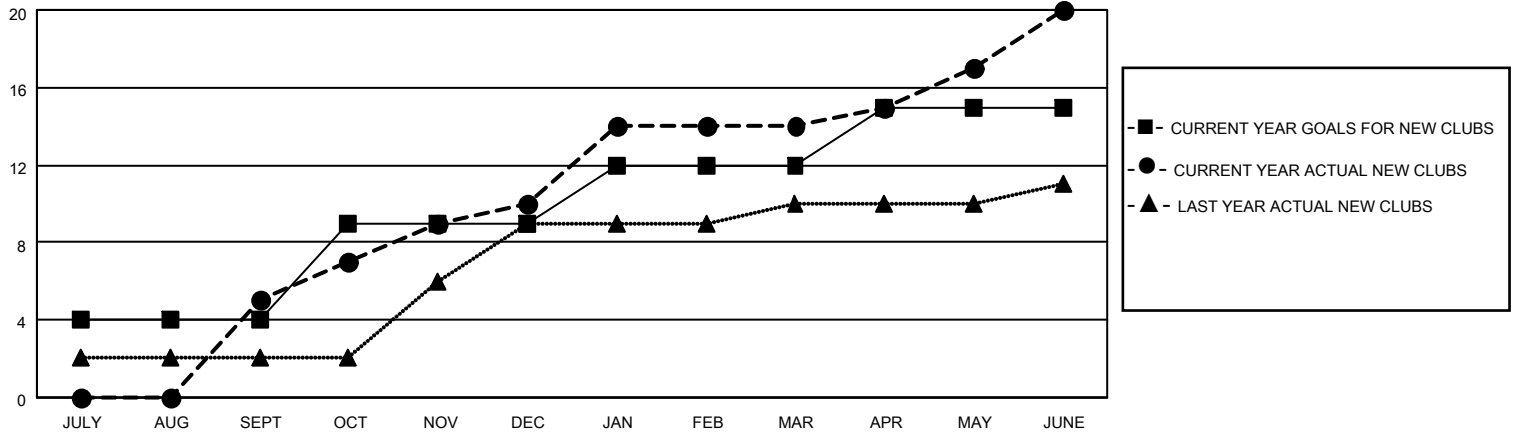
District 318 E

Results as of: 6/30/2022

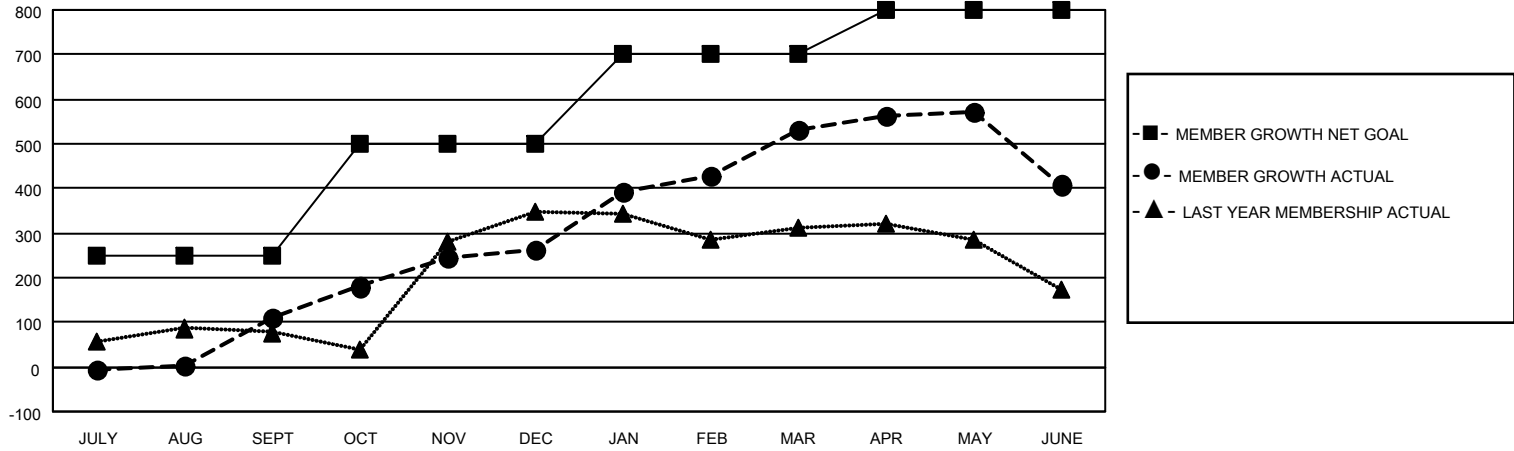
Clubs			
RESULTS FOR 2021-2022			
QUARTER	NEW CLUB GOAL	NEW CLUBS	DROPPED CLUBS
JULY/AUG/SEPT	4	5	1
OCT/NOV/DEC	5	5	0
JAN/FEB/MAR	3	4	0
APR/MAY/JUNE	3	6	0

Members			
RESULTS FOR 2021-2022			
QUARTER	MEMBER GROWTH NET GOAL	MEMBER GROWTH ACTUAL	DROPPED MEMBERS ACTUAL (including transfers)
JULY/AUG/SEPT	250	223	106
OCT/NOV/DEC	250	345	186
JAN/FEB/MAR	200	333	63
APR/MAY/JUNE	100	394	497

GOALS AND ACTUAL NEW CLUBS CUMULATIVE



GOALS AND ACTUAL MEMBERS CUMULATIVE



DROPPED CLUBS: 1	
DROPPED MEMBERS	
DECEASED	42
CLUB CANCELLED	17
OTHER	793
TOTAL	852

132 CLUBS OF 168 ADDED 1 OR MORE NEW MEMBERS

[CLICK HERE FOR CUMULATIVE MEMBERSHIP DATA](#)

<u>GENDER DISTRIBUTION</u>	
MALE	4,811 (77.20%)
FEMALE	1,421 (22.80%)
NON BINARY	0 (0.00%)
PREFER NOT TO ANSWER	0 (0.00%)
TOTAL FAMILY UNIT MEMBERS	2,466
FAMILY MEMBERS PAYING HALF DUES	1,296